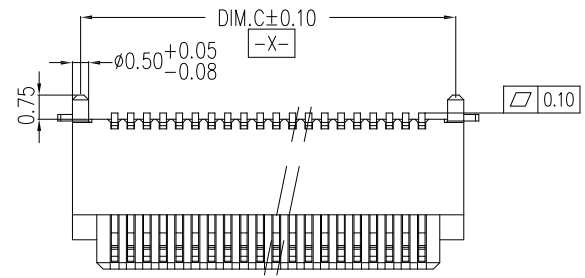
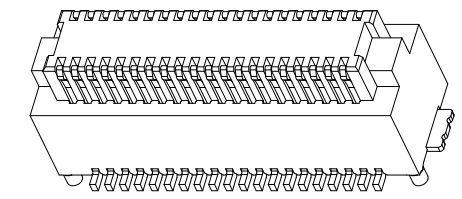
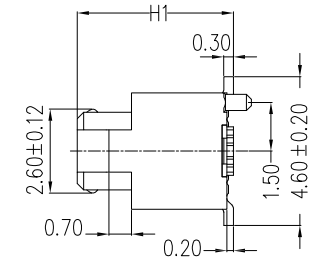
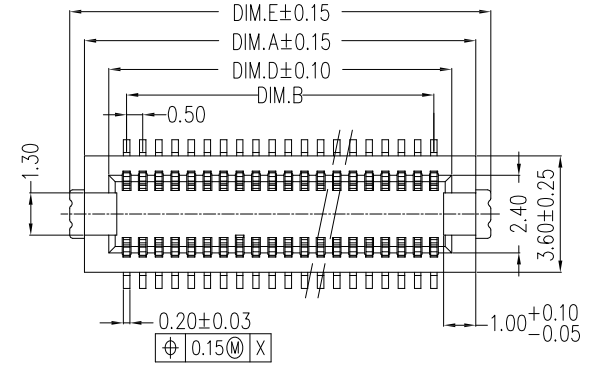
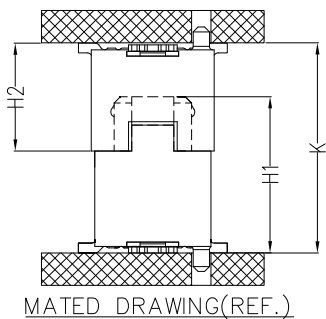
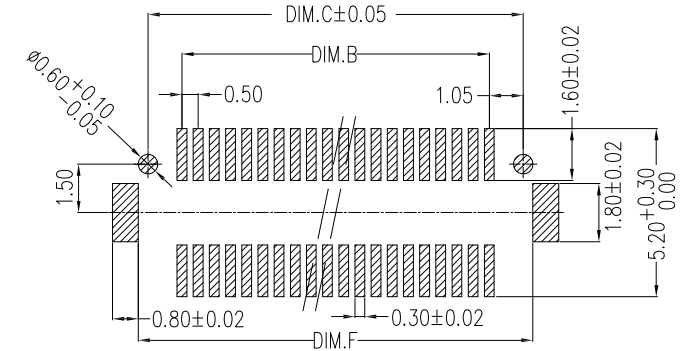


Note:
 1.Material:
 Housing: PA9T UL94V-0;Natural.
 Terminal: Copper Alloy.
 Fitting Nail: Copper Alloy.
 2.Finish:
 Terminal: Gold overall.
 Fitting Nail: Tin overall.
 3.Electrical Characteristics:
 Current Rating: 0.5A AC/DC
 Voltage Rating: 50V AC/DC
 Temperature Range: -25°C~+85°C
 Withstand Voltage: 100V AC/Minute
 Contact Resistance: 30mΩ Max.
 Insulation Resistance: 500MΩ Min.



Recommended P.C.B Layout (Top Side)
 (PCB BOARD TOLERANCE ± 0.05)



ORDER INFORMATION

BS05- 2XX M 1 2 X 1-131

RoHS Compliant

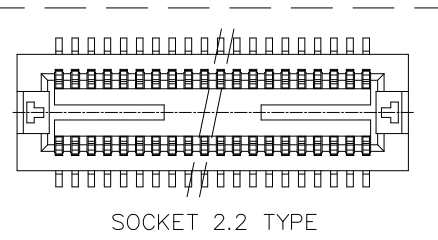
0.5P Board to Board
 Single Slot

K Type
 Housing Material
 2: PA 9T
 0:w/o Post
 1:w/ Post

2 Rows
 XX:Per Row Pin
 M:MALE

PIN NO.	DIM.A	DIM.B	DIM.C	DIM.D	DIM.E	DIM.F
14	5.60	3.00	5.10	4.10	6.50	5.70
20	7.10	4.50	6.60	5.60	8.00	7.20
24	8.10	5.50	7.60	6.60	9.00	8.20
30	9.60	7.00	9.10	8.10	10.50	9.70
32	10.10	7.50	9.60	8.60	11.00	10.20
36	11.10	8.50	10.60	9.60	12.00	11.20
40	12.10	9.50	11.60	10.60	13.00	12.20
50	14.60	12.00	14.10	13.10	15.50	14.70
60	17.10	14.50	16.60	15.60	18.00	17.20

	ASS'Y HEIGHT(K)	PLUG(H2)	SOCKET(H1)
1	3.00	2.33	2.20
2	3.50	2.80	
3	4.00	2.80	
4	4.50	3.33	
5	5.00	3.83	
6	5.50	4.33	2.73
7	6.00	4.83	
8	6.50	3.33	
9	7.00	3.83	4.70
A	7.50	4.33	
B	8.00	4.83	



REV.	REVISION RECORD	DATE
A	Original	10/02/19*

General Tolerance	
LINEAR	0.0 ± 0.35 0.00 ± 0.20
ANGLE	± 3°
UNIT	mm
APPROVED	DATE
DESIGNER	NICKEL
DRAWN	TED
	WAYFON



TITLE: 0.5mm Board to Board Male SMT Vertical
 DWG.NO: BS05-2XXM12X1-131 REV. A
 SCALE 1:1 SHEET 1 OF 1